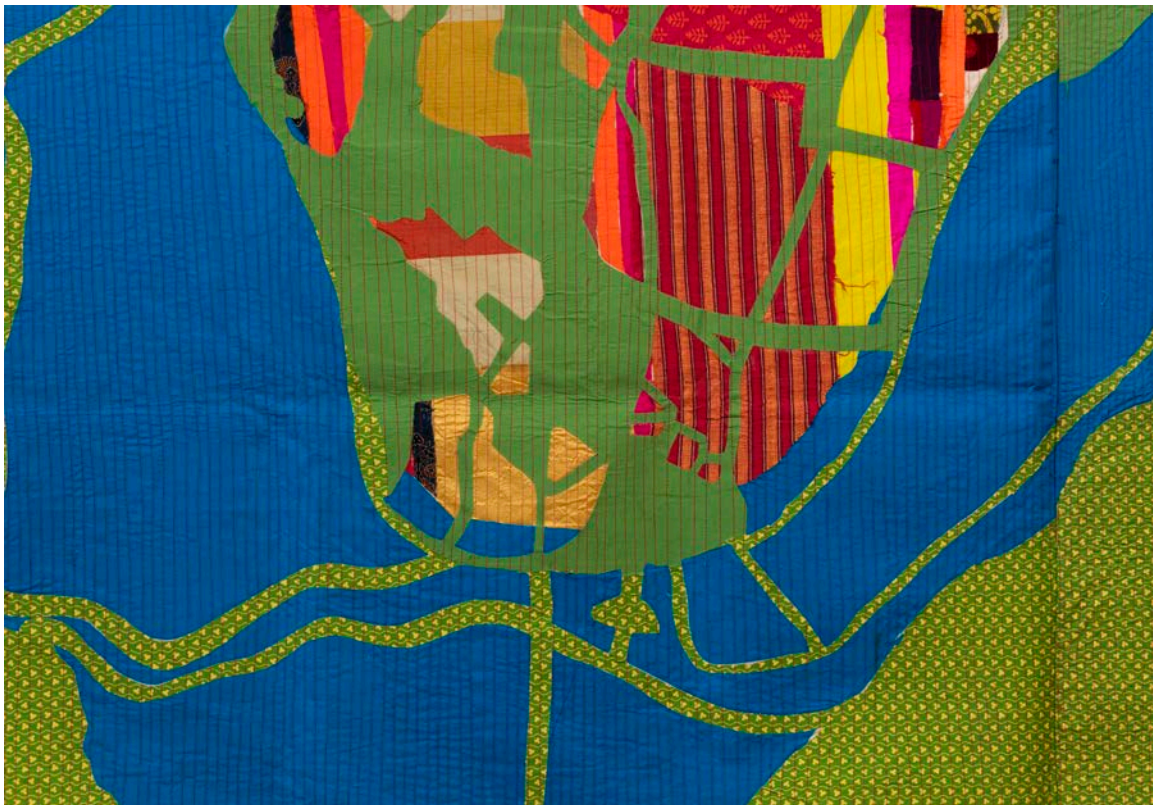


ITERARTE



*Nidhi Khurana, 'Allahabad', 280 x 204 cm, 2012, Cloth and stitching,
Courtesy of Nidhi Khurana*

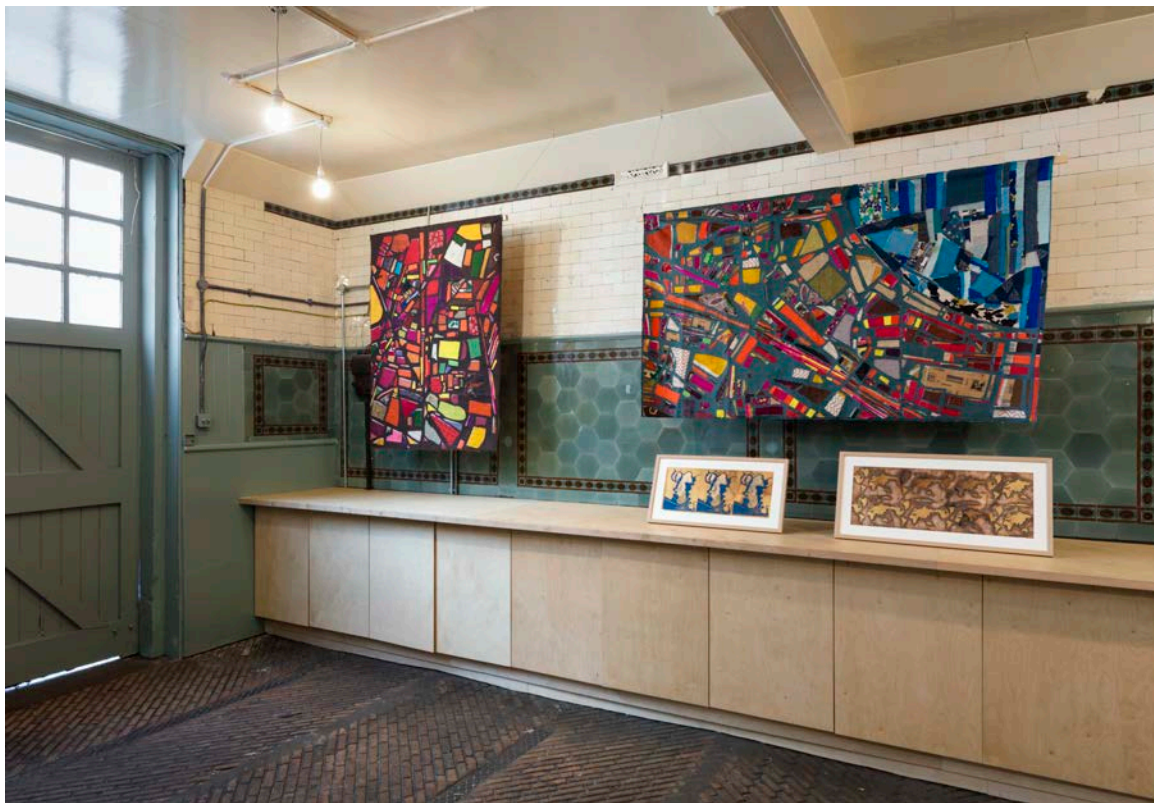
TRACES OF EXISTENCE: PLACE BETWEEN PLACES

ITERARTE Launches Exhibition by Nidhi Khurana

14-26 March 2024, 34 Bourdon Street, London W1K 3PR
www.iterarte.com

ITERARTE, an itinerant gallery focused on facilitating connections between artists, artisans, and collectors through its physical and online cultural program is now open. *Traces of Existence: Place Between Places* marks Nidhi Khurana's debut solo show in the UK and ITERARTE's inaugural exhibition. The exhibition's title mirrors ITERARTE's mission to trace artists' presence across place and time.

Khurana's practice, showcased in works spanning a decade, aligns well with ITERARTE's vision, as she skillfully merges various traditional artisanal practices and techniques in a unique universe. Similarly, ITERARTE's goal is to spotlight contemporary artistic expressions that explore and challenge the connections between cultures, traditions and identities across three continents, from the Mediterranean region to India - lands steeped in rich history and heritage.



Left, 'Cityscape', 152 x 144 cm, 2012, cloth and stitching, Right, 'Seaface', 116 x 198 cm, cloth and Stitching, Bottom left, 'Goa History I', 25.9 x 60 cm, cloth and stitching, Bottom right, 'World map', 29 x 75 cm, 2020, mixed media, Courtesy of Nidhi Khurana

Khurana's art is profoundly personal. She uses maps as her primary tool of expression, aiming to navigate both the physical and spiritual realms. Her compelling collection of maps delves into subjects close to her heart and interests.

The chronological thread woven through Khurana's works shows a holistic approach to cartography, drawing inspiration from a diverse range of cognitive processes including Petroglyphs, Aboriginal Songlines, Mappaemundi, Yatra maps, Islamic cosmological diagrams, and historic city maps from places she holds close to her heart like Calcutta and Bombay.

Additionally, Khurana's varied map works serve as philosophical reflections of her engagement with the world, utilizing specific materials to subtly comment on nature and the environment, often employing traditional materials facing the threat of extinction.

Nidhi Khurana advocates for the preservation of age-old artisanal practices as a resistance against humanity's tendency towards self-destruction. She adeptly deconstructs these traditional techniques, adapting them to her artistic vision. By experimenting with natural dyes, layering techniques, and incorporating materials such as gold and silver that are traditionally used differently, Khurana sheds light on the fragility of the human condition. Through her extensive portfolio encompassing various mediums such as drawings, textiles, carpets, prints, artist books, and sculptures, Khurana emphasizes a process where the artistic idea dictates the choice of material. Her exhibition features a diverse range of materials including natural dyes, 24-carat gold and silver, handmade paper, slate, and silk. Notably, many of the materials used in her larger works come from recycled cloth scraps sourced from tailors and second-hand cloth markets.



Nidhi Khurana, 'Kolkata Black, 71 x 57 cm, 2017, Natural dyes and stitching, courtesy of Nidhi Khurana

In a portfolio which spans drawings, textiles, carpets, prints, artist books, and sculptures, Khurana has developed a process wherein the artistic idea determines the material and medium of her work. The exhibition encompasses natural dyes, 24-carat gold and silver, handmade paper, slate and silk. Much of the material used in the larger quilted works is recycled cloth scraps collected from tailors and larger pieces of fabric from the numerous second-hand cloth markets.

Newly co-founded by Tamara Chalabi and Shilpa Sharma, ITERARTE is the result of a shared creative vision, to celebrate and showcase artistic talent from the Mediterranean Sea to the Indian Subcontinent through curated exhibitions, artist spotlights, and collaborative projects.

Traces of Existence; Place Between Places is on view from 14 to 26 March in Mayfair with a full artist catalogue to follow.

NOTES TO EDITORS

About ITERARTE

ITERARTE is a nomadic gallery that is dedicated to advancing the way artists, artisans, and collectors connect, forging new commercial opportunities and facilitating creative partnerships.

It is driven by a desire to transform the ways that people can discover art in all its infinite forms, to interact with it, and share its languages, to form connections and inspire, and to purchase works from the artists they discover on the course of that journey.

ITERARTE's name takes inspiration from the Latin word for journey (*iter*), so it's about the constant exploration of new worlds and the discovery of invention and innovation, but it's also about showcasing the creative journey that each and every artist seeks to navigate.

Taking inspiration from the Latin word for journey - *iter* - ITERARTE is about the constant exploration of new worlds and the discovery of invention and innovation, with a mission to transform how we, the audience at large, can encounter new work and invest in developing artists.

About Tamara Chalabi

Tamara Chalabi, a cultural entrepreneur, is a published author and curator, specialising in contemporary Middle Eastern art and culture. She has collaborated on multiple exhibitions with world-famous artists.

In 2012, Chalabi co-founded the Ruya Foundation, a non-profit organisation dedicated to enriching contemporary culture in Iraq and internationally. Leading the Foundation's main program, she addresses the challenges of contemporary culture amidst conflict and a global prioritisation of antiquities.

In 2018, Chalabi established RUYA MAPS, a sister organisation to the Ruya Foundation, focusing on collaborating with visual artists in socially and politically unstable regions worldwide. Ruya, under Chalabi's guidance, conducts an extensive program of art relief activities in the refugee camps of northern Iraq, manages the only publicly accessible online database of contemporary Iraqi artists, and serves as the commissioner for the National Pavilion of Iraq at the Venice Biennale, garnering international recognition from outlets such as the Financial Times, the New York Times, and Le Monde.

For the 57th edition of the Biennale in May 2017, Chalabi conceived and co-curated the Iraq Pavilion, selected in the top five pavilions by leading international press. It explored the dual meaning of its title "Archaic!", which can simultaneously refer to an ancient cultural heritage and a fragile contemporary political entity. It showcased contemporary and Modern Iraqi artists alongside ancient Iraqi artefacts from the Iraq Museum in Baghdad, for the first time in 40 years.

Through Ruya, Chalabi has collaborated with international artists such as Ai Weiwei

and Francis Alÿs, and her impactful work has received numerous nominations and awards. Notably, she was recognised as one of the 100 global thinkers for her contribution to the "Welcome to Iraq" exhibition by Foreign Policy Magazine.

About Shilpa Sharma

Shilpa Sharma has over a decade of experience in textiles and fashion. Directing the sales and operations of several successful private-label fashion brands in Europe and cultivating strategic cross-border relationships with manufacturers and supply chain partners in India, Bangladesh, Eastern Europe and China.

Sharma studied fashion design at the National Institute of Fashion Technology, India; and Export Marketing at the Indian Institute of Foreign Trade before achieving a Masters of Art from Nottingham Trent University in 2000. Having fostered an ongoing passion for the business of art and connecting upcoming artists with buyers, Sharma underwent further studies at Sotheby's Institute of Art in 2021 having transitioned into the realm of art advisory and offering her insights to high-net-worth individuals. Shilpa's multifaceted skill set and commitment to the fusion of art, culture and business reflects a genuine enthusiasm for the synthesis of these domains.

About Nidhi Khurana

Nidhi Khurana (b.1980) is an Indian artist and educator based in New Delhi. Her studio work takes the form of drawings, textiles, carpets, prints, artist books, and sculptures to reflect upon the role of the human within nature.

In her recent works, she explores her relationship with the natural world by mapping her experiences as cyclical graphs of time, inspired by diversity in cognitive approaches such as the Australian aboriginal dreamtime, the Mappamundi, the yatra (pilgrimage) maps, representations from Islamic cosmological diagrams and illuminated manuscripts. Nidhi uses natural dyes, 24-carat gold and silver, handmade paper and silk to document her experience of the world.

Khurana has taken part in many residencies around the world and has received multiple scholarships and funding for her work. Recent participation and projects include the Westwerk Artist Residency Program, Hamburg in 2022, and the Space Studio residency in Baroda, Gujarat from 2021-22 and artist in residence at the Kiran Nadar Museum of Art in Delhi as a part of the exhibition "Very Small Feelings".

Over the years Nidhi has been involved in conceiving, developing and executing Art Education programs for independent foundations and companies like Kiran Nadar Museum of Art, the Zabarwan Foundation, FICA, Art reach, Flow India, Art 1st, SAAIER, Manas Foundation; including one for the first "Big Draw" event in the country and another on "Integrated Learning Platforms" at the British Council, New Delhi.

Nidhi was born in Allahabad, Uttar Pradesh and received a Master's in Art from the School of Arts and Aesthetics, Jawaharlal Nehru University, New Delhi. She completed her Bachelor in Visual Arts with a specialisation in Sculpture from the

Faculty of Fine Arts, Maharaja Sayajirao University, Baroda, Gujarat in 2003.
Currently, Khurana is taking part in the Fellow Artist in Residence at The Institute of
Advanced Studies, Central European University, Budapest.

Press Information | Interviews | Images

Nigel Rubenstein

nigel@stjames-arts.com

